

## Examine your Meter

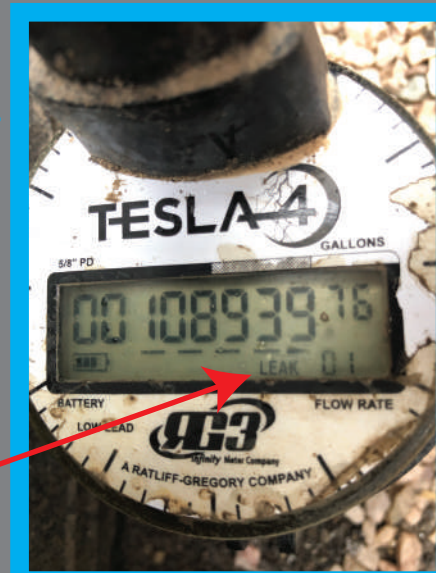
It is important to make sure no water is being used inside (washing machine, showers, faucets etc.) nor any irrigation outside your home during your meter examination. Locate your water meter within a black hard plastic box, see both Figures A and B. If your digital counter is actively increasing, you probably have a leak.



Standard DSWS Meter

### Tenths and Hundreds

To see if water is actively running through your meter, watch to see if these two digital numbers (tenths and hundreds) are actively increasing.



Meter displaying a Leak

### Leak Alarm

This meter displays the word "leak" signifying that a problem has occurred. Additionally, the total amount of water used on this particular meter is, 108,939 gallons.



Figure A: meter box



Figure B: meter and main shut off valve